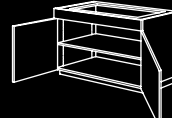
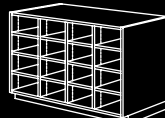
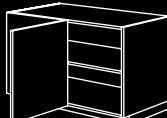
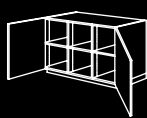
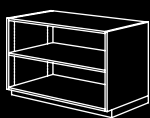




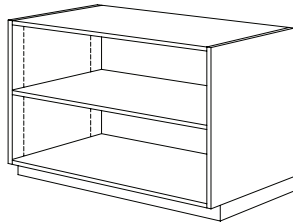
CABINET DESIGN GUIDE

The cabinet design samples on the following pages are subdivided as follows:

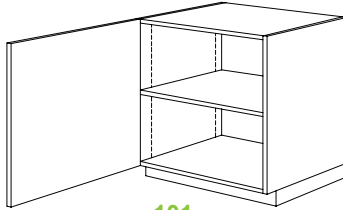
Base Cabinets w/o drawers	100 series
Base Cabinets w/ drawers	200 series
Wall Hung Cabinets	300 series
Tall Storage Cabinets	400 series



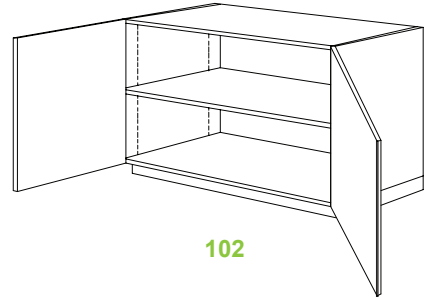
100 SERIES - Base Cabinets w/o Drawers



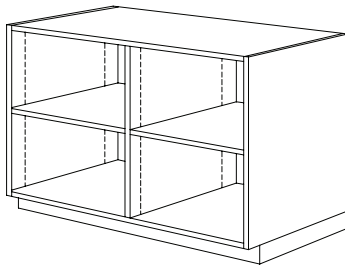
100
Open



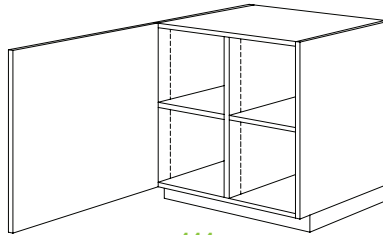
101



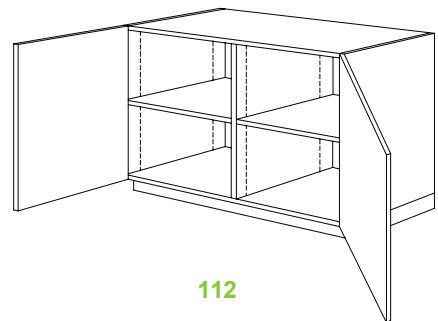
102



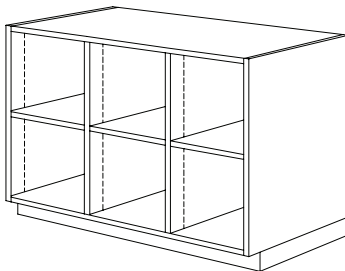
110
Open



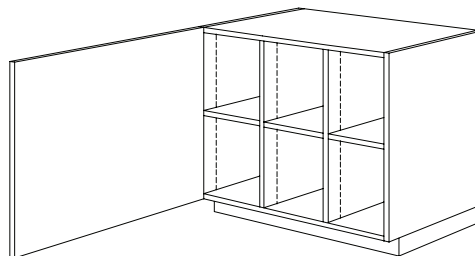
111



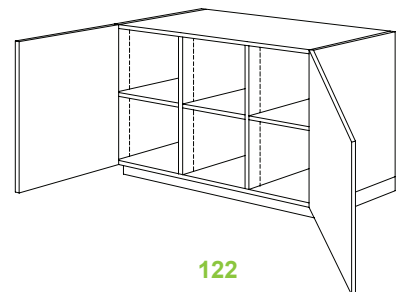
112



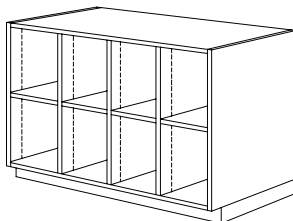
120
Open



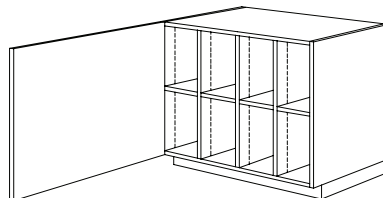
121



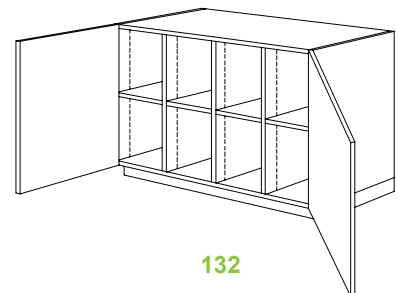
122



130
Open

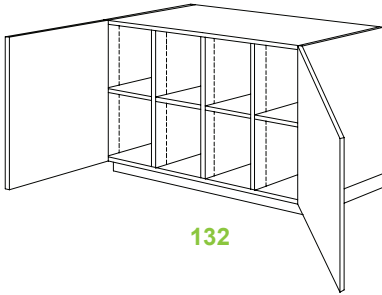


131

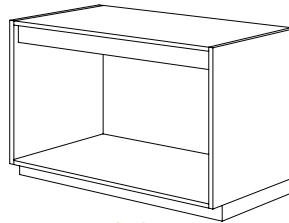


132

100 SERIES - Base Cabinets w/o Drawers

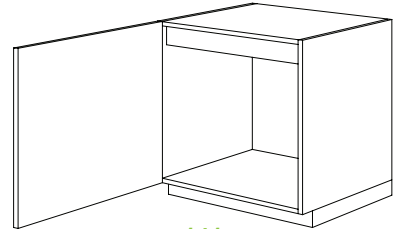


132



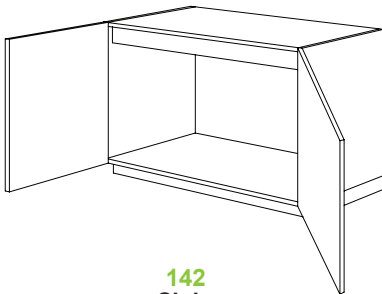
140

Open / Sink
Specify Apron Size
Apron Loose



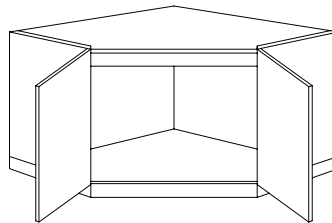
141

Open / Sink
Specify Apron Size
Apron Loose



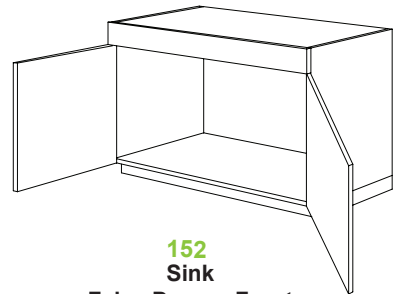
142

Sink
Specify Apron Size
Apron Loose



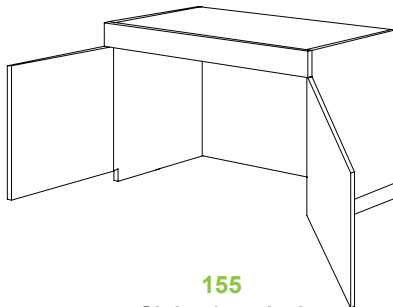
148

Apron Behind Doors
Specify Apron Size
Apron Loose



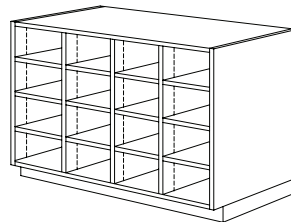
152

Sink
False Drawer Front
Includes Drawer Stretcher



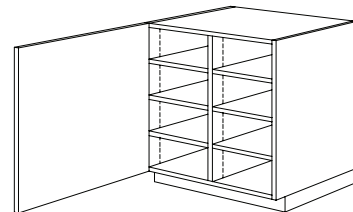
155

Sink w/out deck
False Drawer Front
Includes Drawer Stretcher

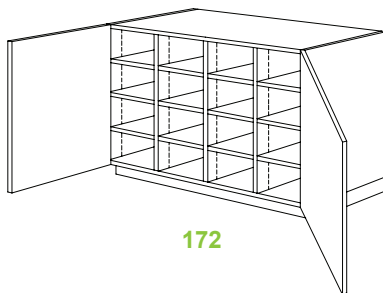


170

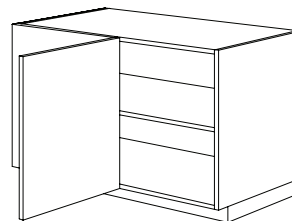
Open



171



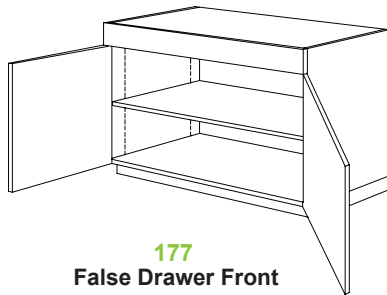
172



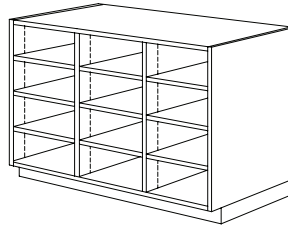
176

Blind Corner
Specify Blind Panel Width

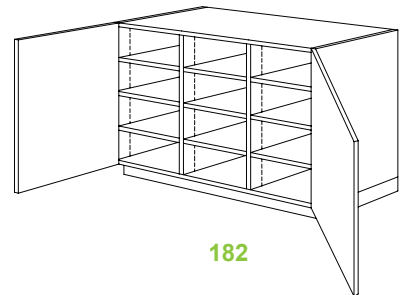
100 SERIES - Base Cabinets w/o Drawers



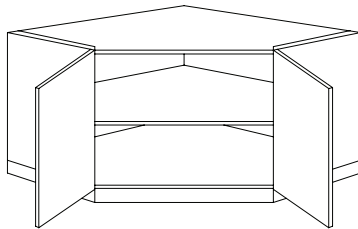
177
False Drawer Front
Includes Drawer Stretcher



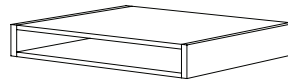
180
Open



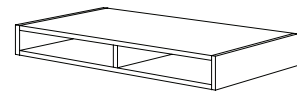
182



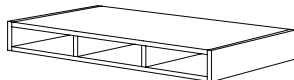
186
Corner



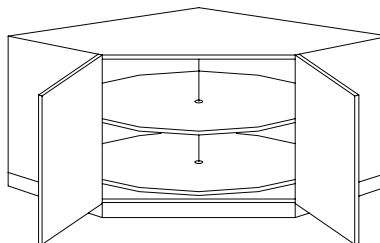
190
Storage Apron Open



191
Storage Apron Open



192
Storage Apron Open

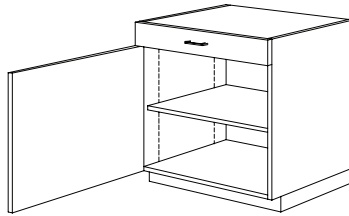


196
Corner / Lazy Susan
(hardware not included)

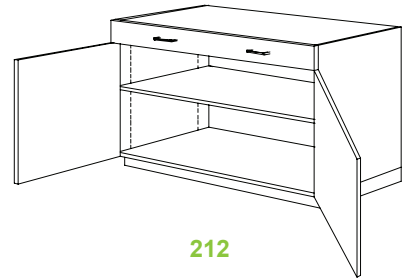
200 SERIES - Base Cabinets with Drawers



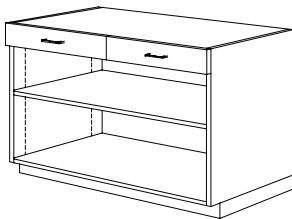
210
Open, Single Drawer



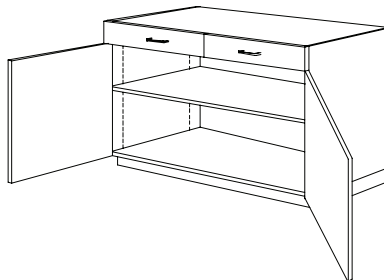
211



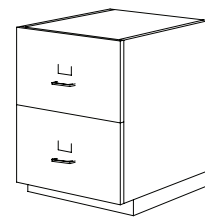
212



220
Open, Two Drawers



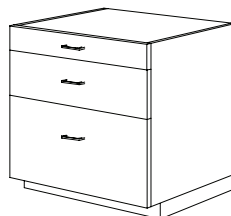
222
Two Drawers



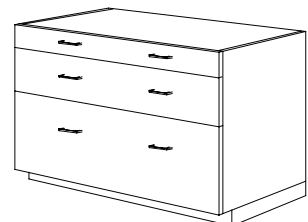
223
File Drawer Cabinet



224
File Drawers w/ Full
Extension Slides and File
Follower or Hanging System

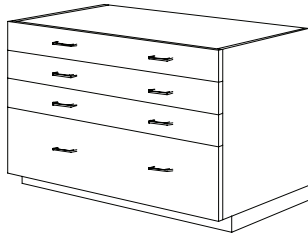


230
Specify Drawer Heights



231
Specify Drawer Heights

200 SERIES - Base Cabinets with Drawers



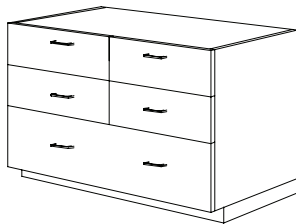
240
Specify Drawer Heights



242
Specify Drawer Heights



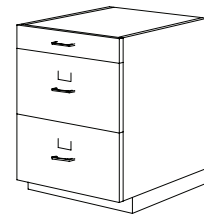
250



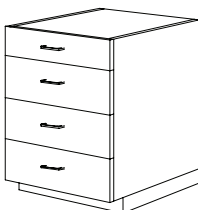
251



252



253
File Drawers w/ Full Extension Slides
and File Follower or Hanging System



254
Specify Drawer Heights

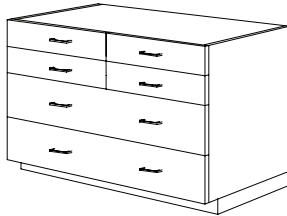


255
Specify Drawer Heights



260
Equal Height Drawers

200 SERIES - Base Cabinets with Drawers



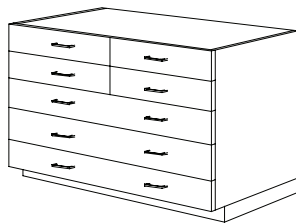
261
Specify Drawer Heights



262



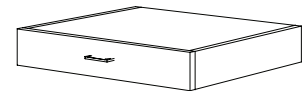
270
Equal Height Drawers



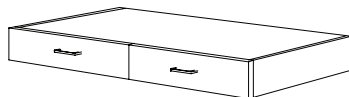
271
Specify Drawer Heights



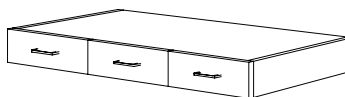
272
Specify Drawer Heights



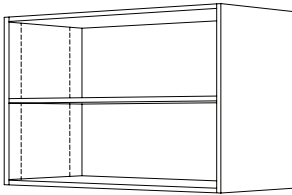
290



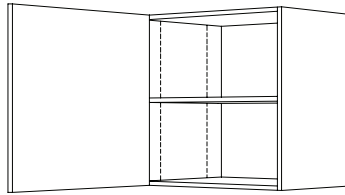
291
Drawer Apron



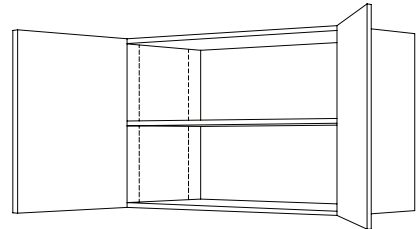
292
Drawer Apron



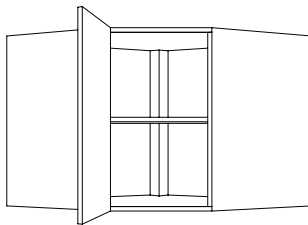
300
Open



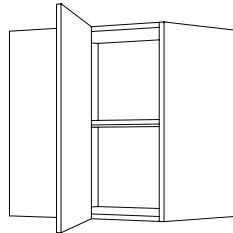
301
Single Door



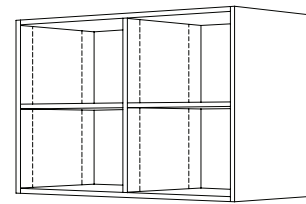
302
Double Door



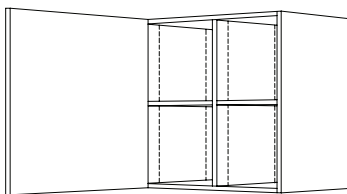
308



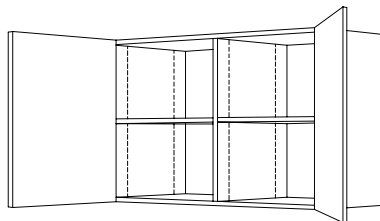
309
Blind Corner
Specify Blind Panel Width



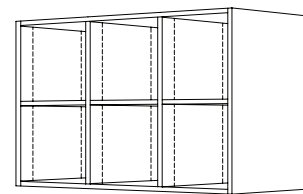
310
Open



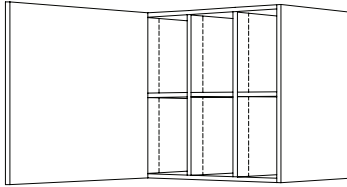
311
Single Door



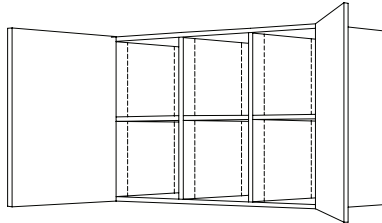
312



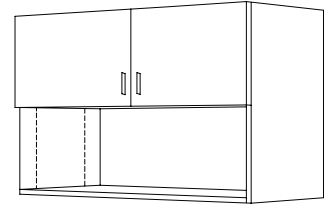
320
Open



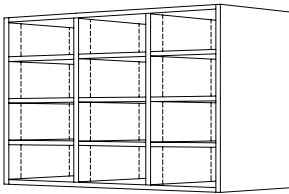
321
Single Door



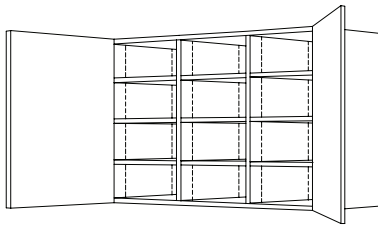
322
Double Door



326

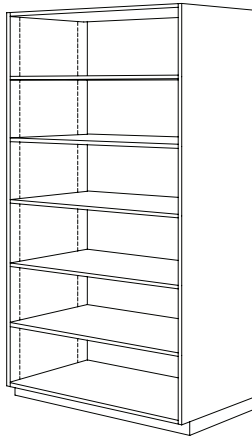


340
Open

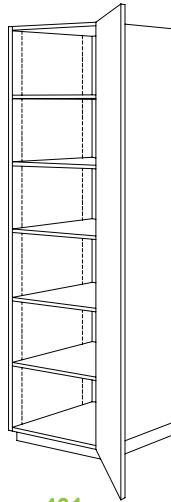


342
Double Door

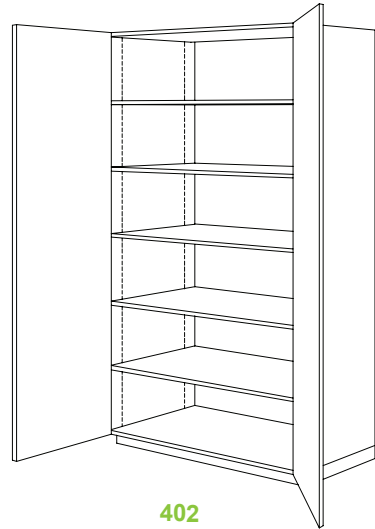
400 SERIES - Tall Storage Cabinets



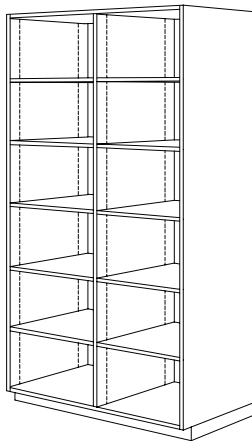
400
No Doors



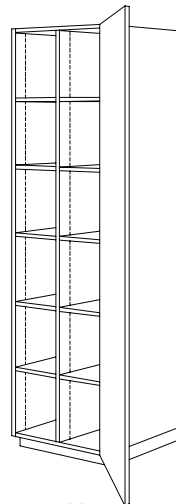
401
Single Door



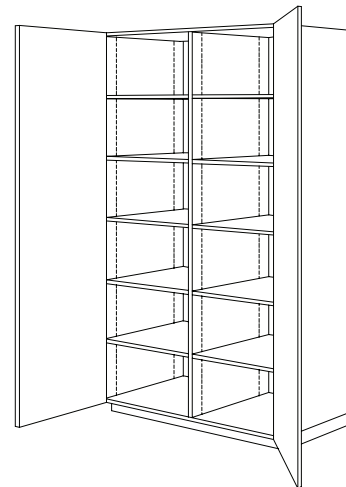
402
Double Door



410
No Doors

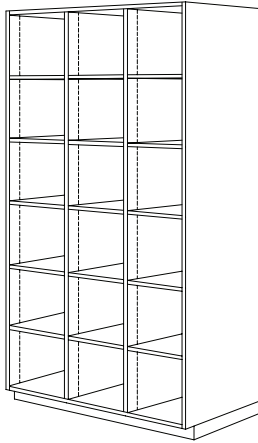


411
Single Door

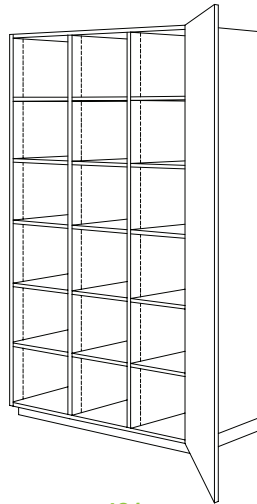


412
Double Door

400 SERIES - Tall Storage Cabinets

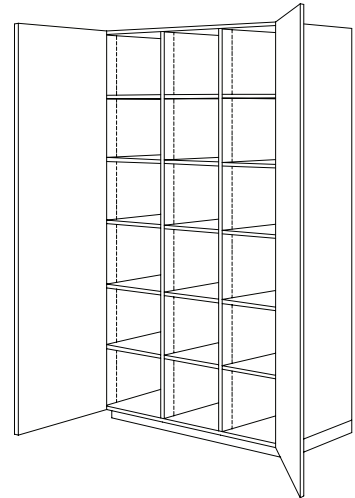


420



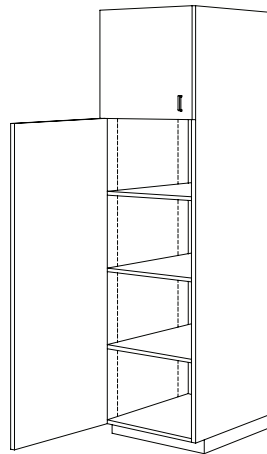
421

Single Door



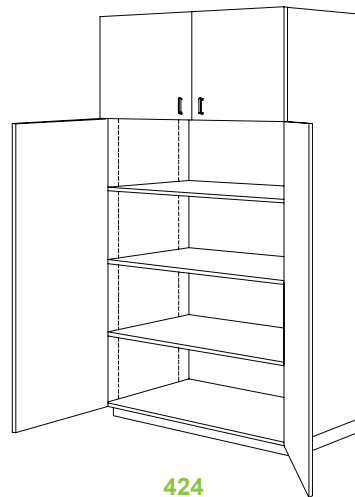
422

Double Door



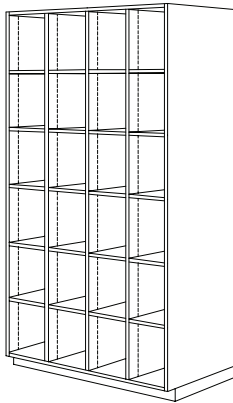
423

Split Height

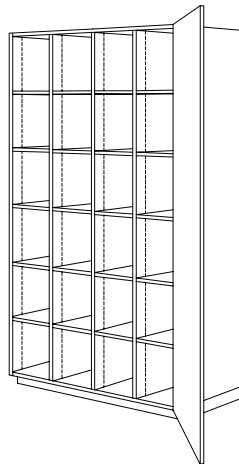


424

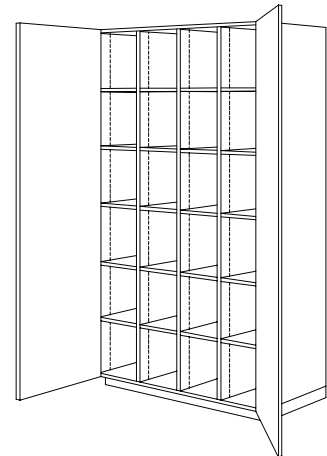
Split Height



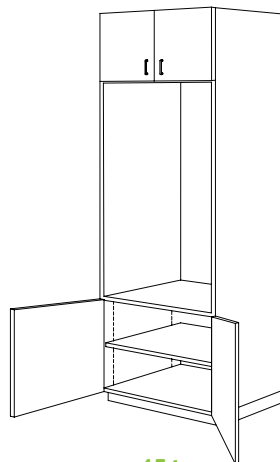
430



431
Single Door



432
Double Door



454

Specify Bottom of Cabinet to
Bottom of Oven Opening
Specify Oven Opening Height
Specify Doors or Drawer Below